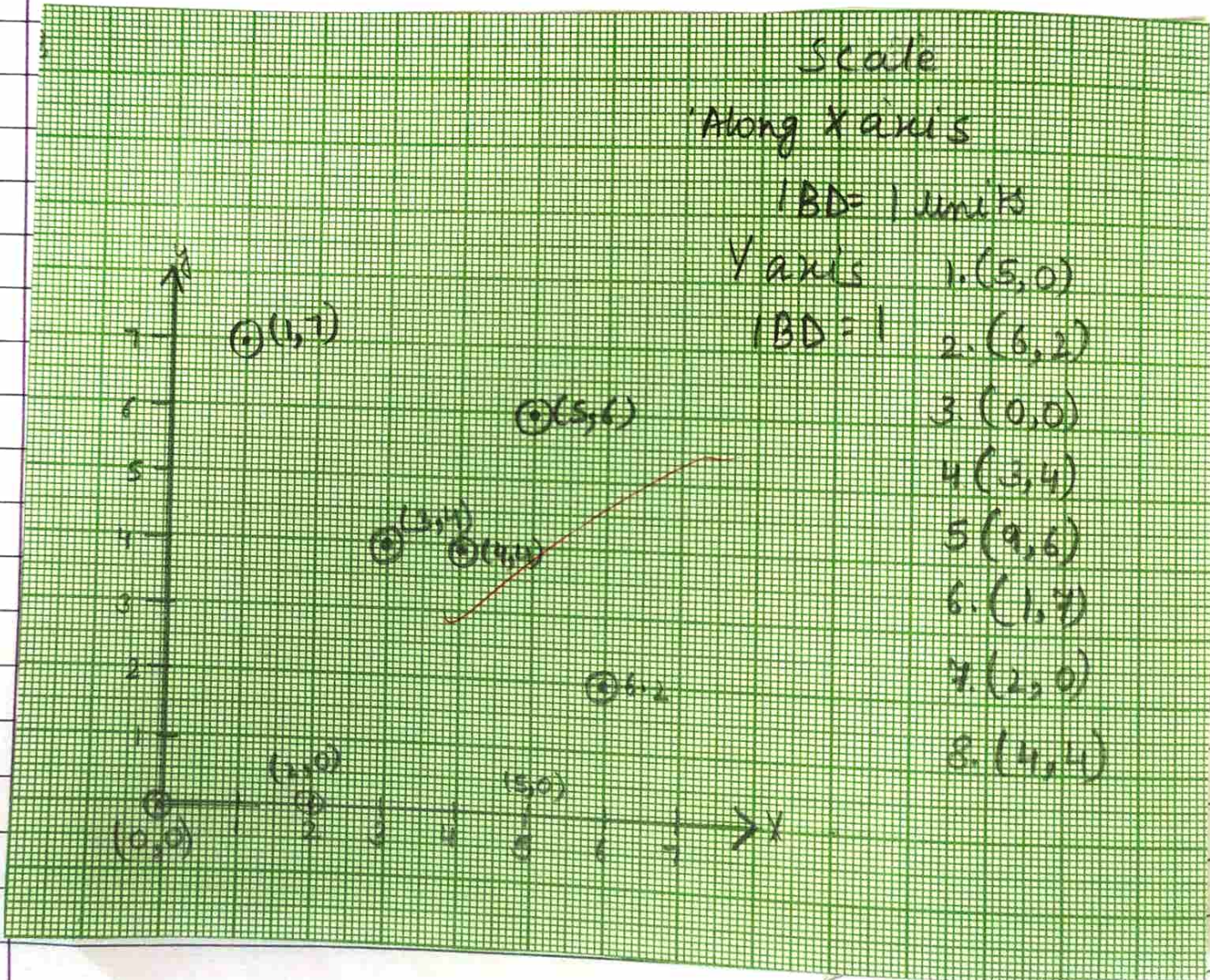


Chapter-13
Introduction to Graphs

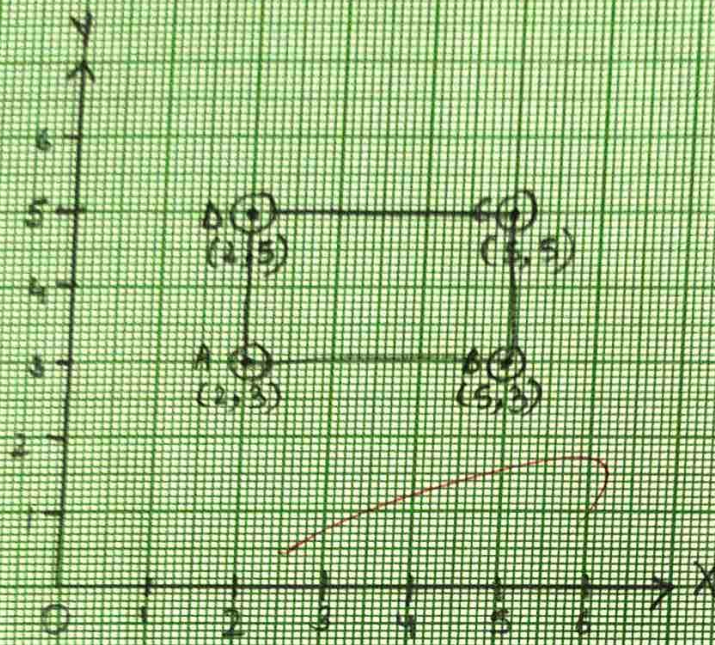
WS-1

Q1 on Book

Q2: Plot the following points on the graph.

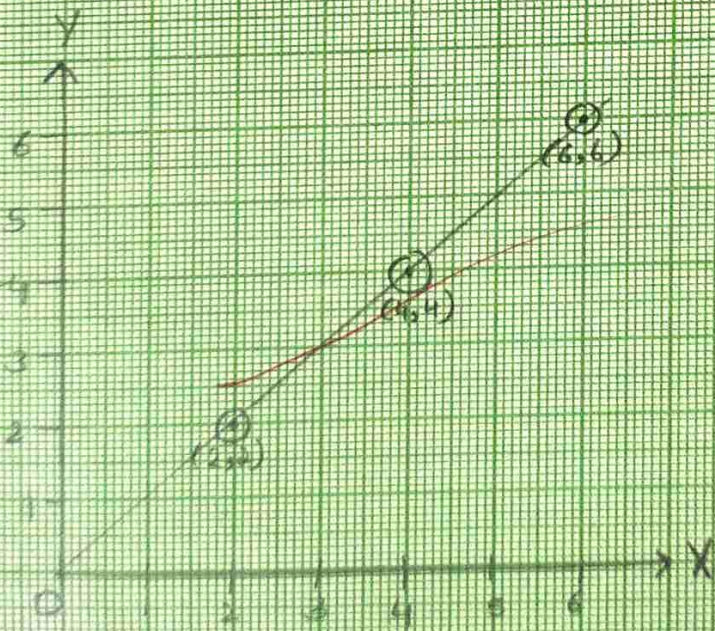


Q4:



Scale
Along X axis
 $1BD = 1$ unit
Along Y axis
 $1BD = 1$ unit

Q5:



Scale
Along X axis
 $1BD = 1$ unit
Along Y axis
 $1BD = 1$ unit

Yes, the line passes through the origin.

WS-2

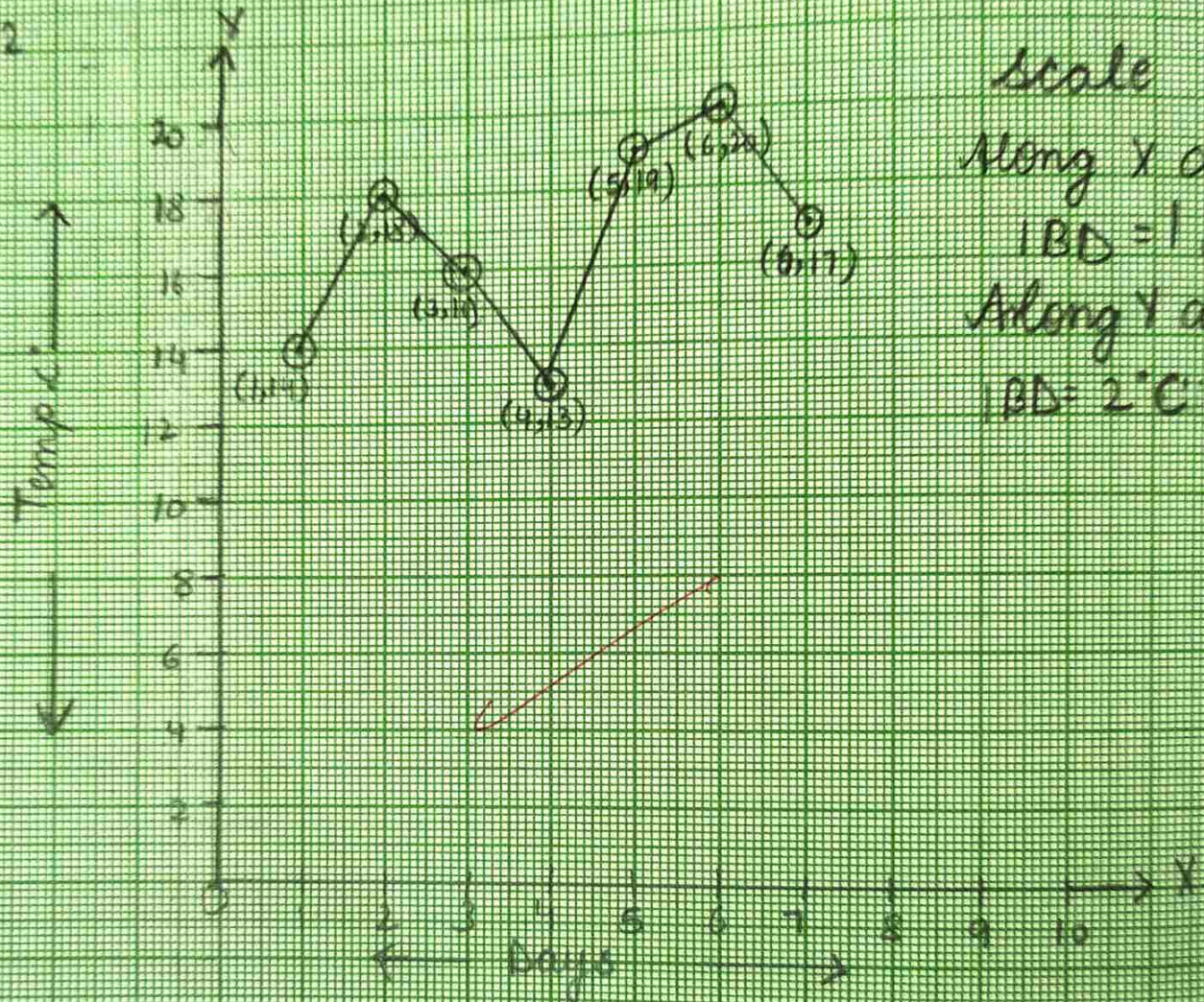
Q1:

Day (October)
Temp in °C

1	2	3	4	5	6	7
14	18	16	13	19	20	17

WS-2

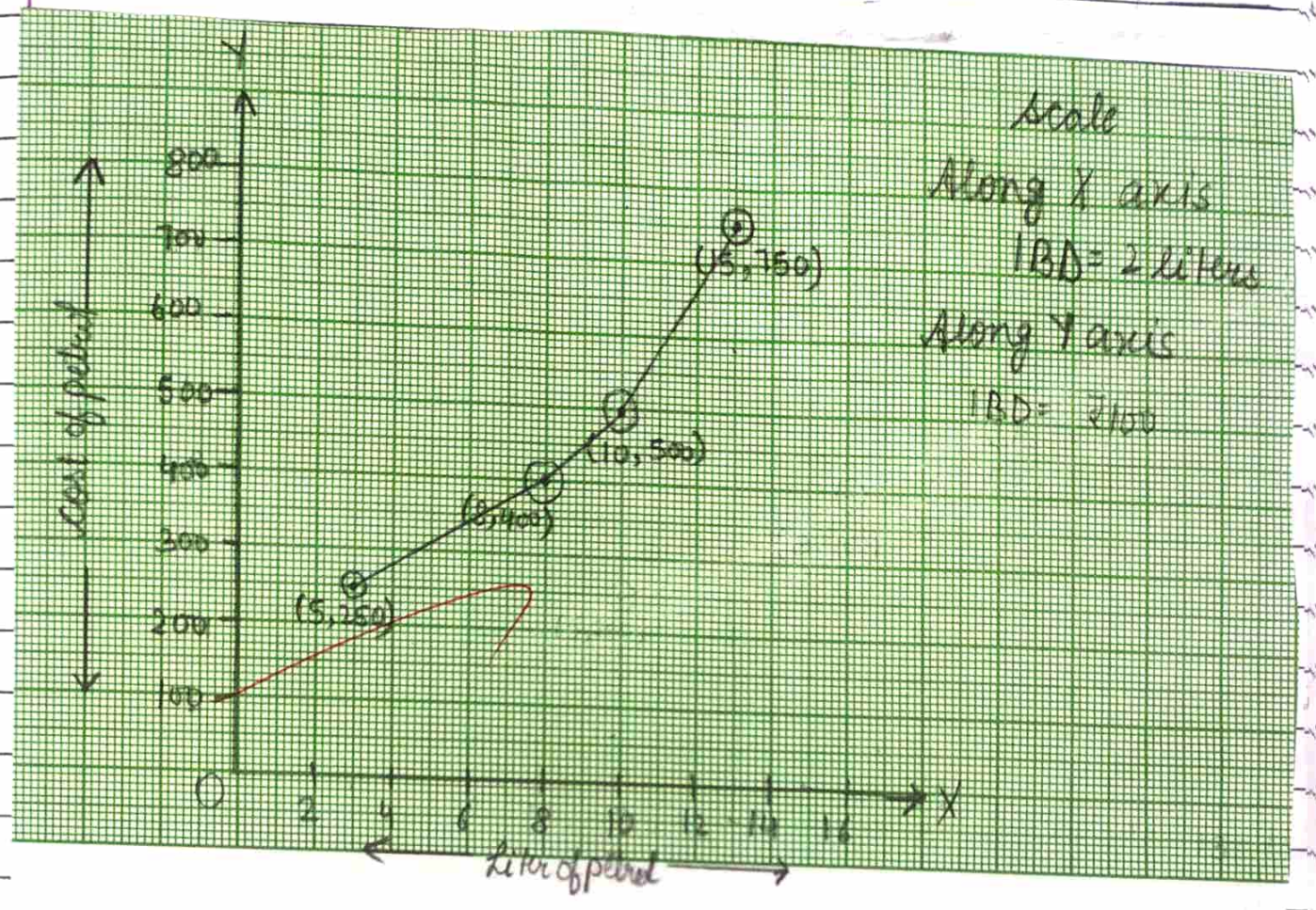
Q1



Q2: Litres of Petrol

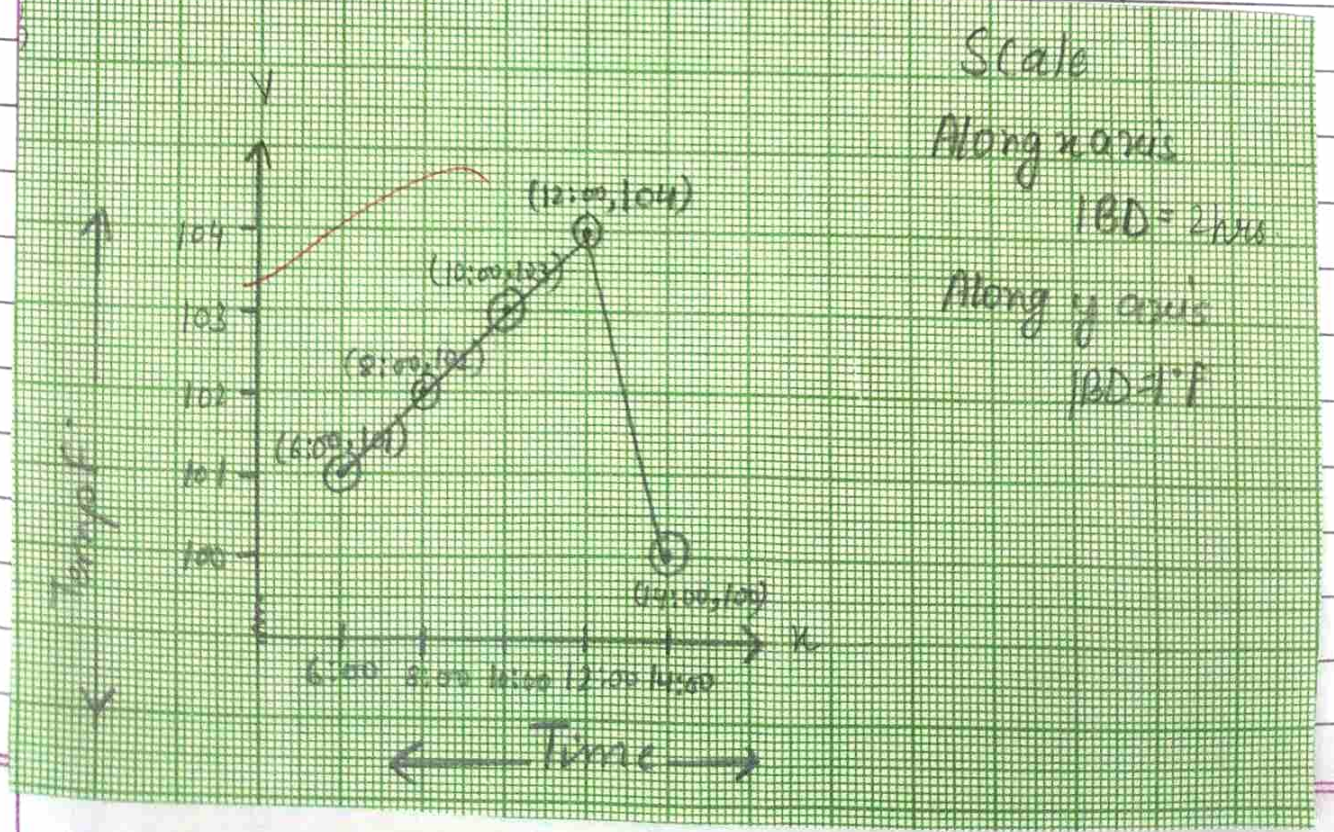
5	8	10	15
250	400	500	750

Cost of Petrol



Q3:

Time (in hours)	6:00	8:00	10:00	12:00	14:00
Temp in °F	101	102	103	104	100



Q4:

Time (in hour)
Speed in (km/hr)

4:00

6:00

8:00

10:00

12:00

14:00

30

50

60

45

80

70

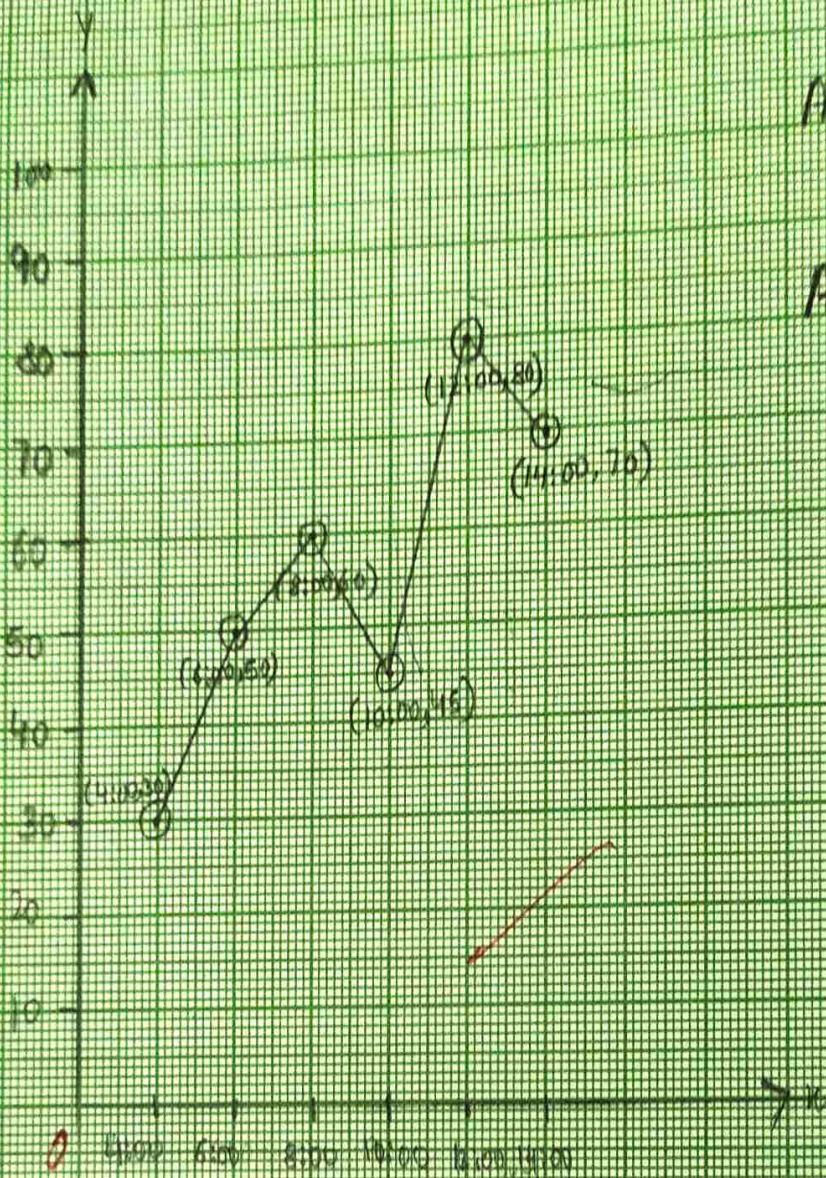
Scale

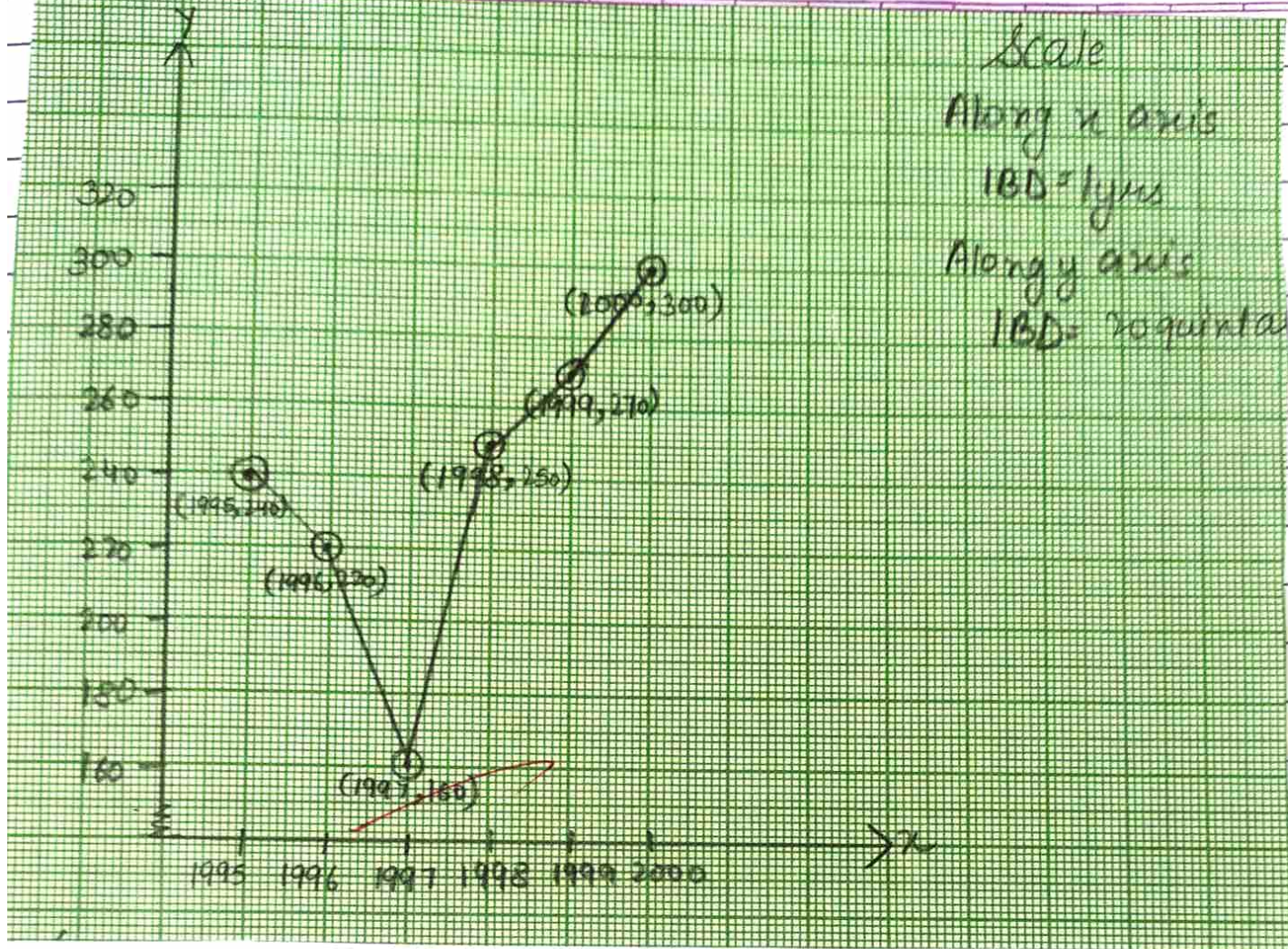
Along x axis

1 BD = 2 hrs

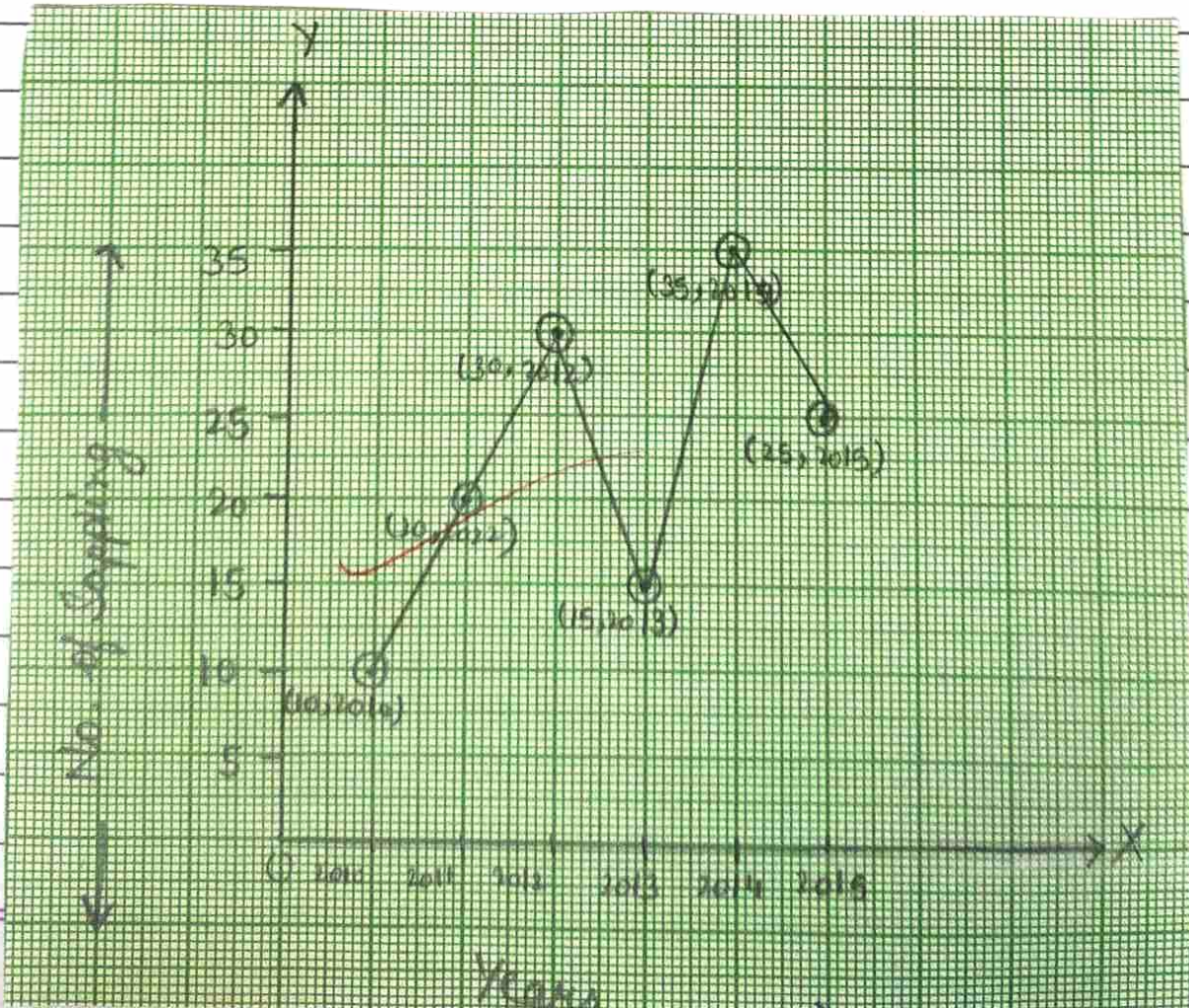
Along y axis

1 SD = 10 km/hr





Value Based



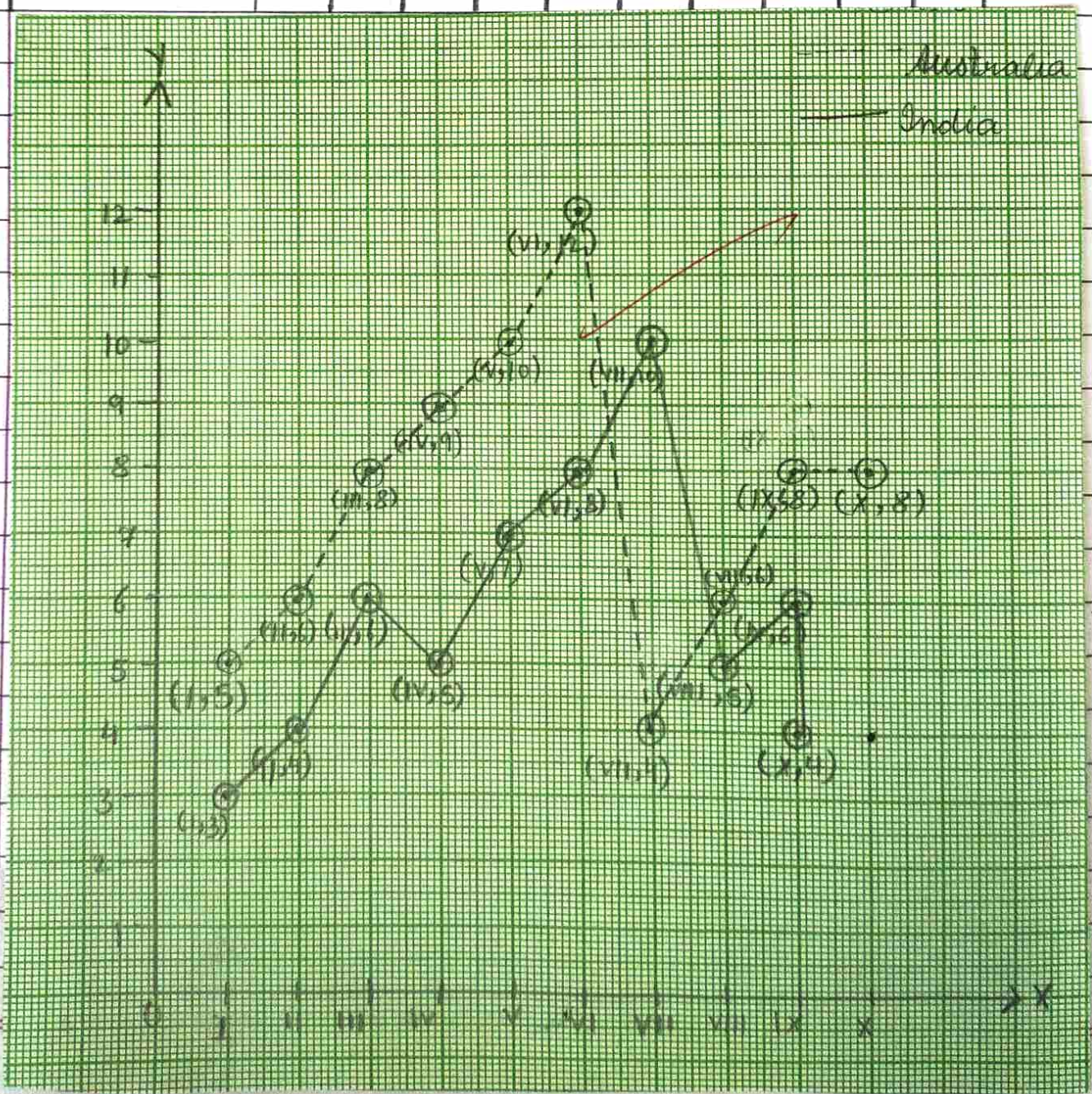
b) Say no to plastic
say no to deforestation

c) Caring, kind

Brain Teasers

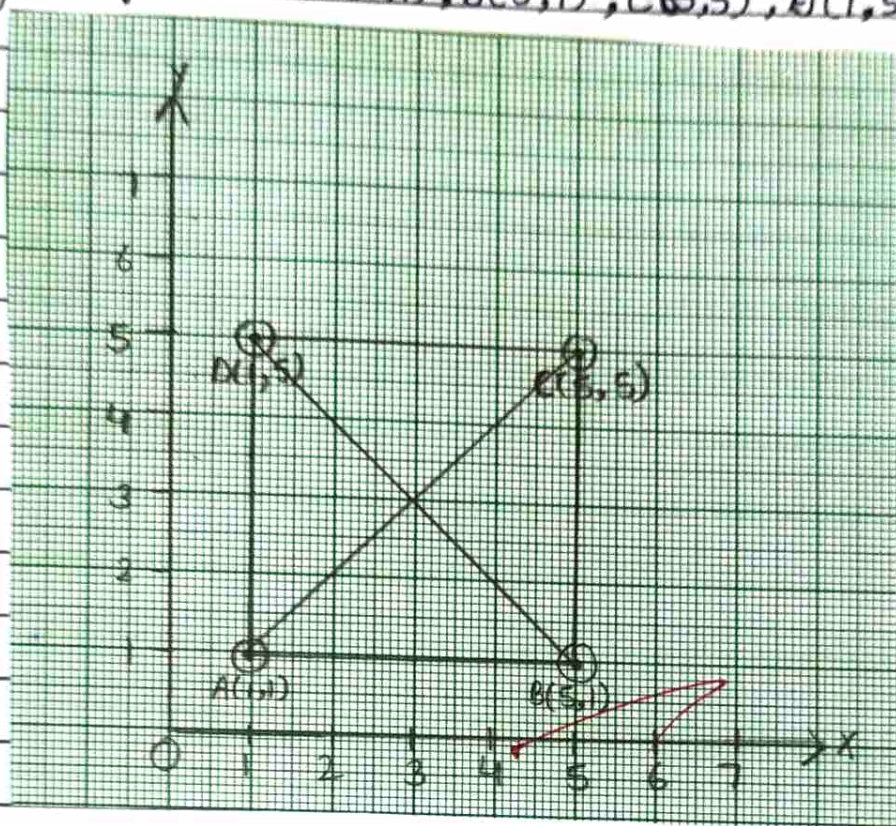
Q1, 2 In Book

Q3:

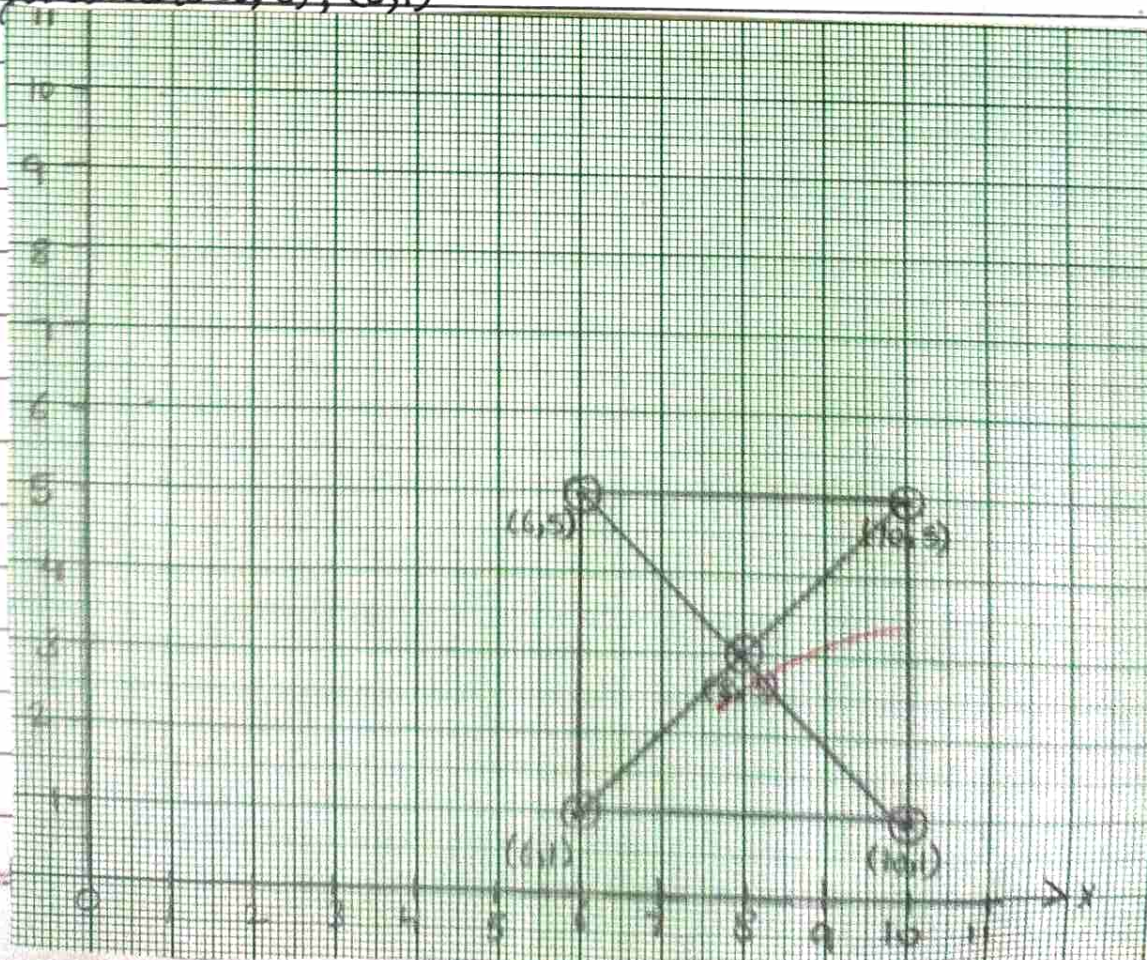


HOTS

Q1: Plot the given points: $A(1,1)$, $B(5,1)$, $C(5,5)$, $D(1,5)$

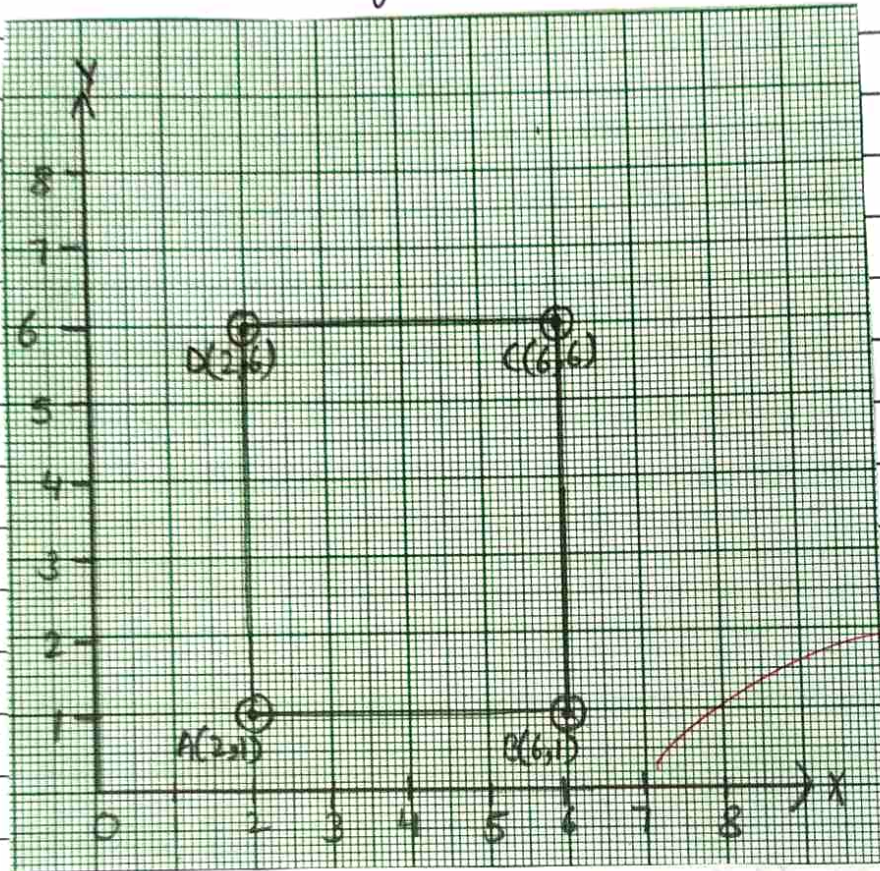


Q2: Diagonals are $(8,3)$, $(6,1)$



Enrichment Questions

Q1: Vertices of rectangle: $(2, 1)$ and $(6, 6)$



Q2: Draw XY parallel to x -axis at a distance of 5 units from x -axis and a line segment PQ parallel to y -axis at a distance of 3 units from y -axis

